



Your Competitive Advantage
for
Environmental, Health, and Safety

Environmental, Health, and Safety (EHS) landscapes are constantly changing as new legislation and guidelines emerge and industries are expected to adapt quickly to comply. This presents our clients with problems which often intersect at financial cost and social responsibility.

Our mission at Altamira is to provide comprehensive EHS solutions to creatively help our clients achieve responsible **environmental** stewardship, ensure the **health** of employees and their businesses, and foster a **safety** culture.

Our industry leading staff have experience at both the federal and local levels to navigate our clients through traditional and complex compliance problems. We support clients across a broad range of industries and geographies.

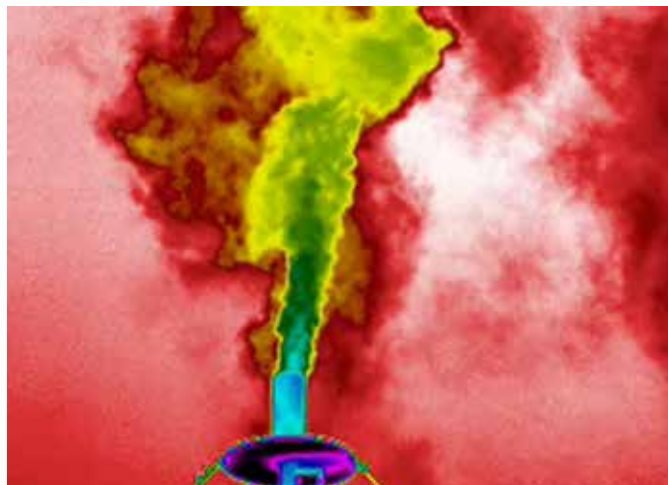
Air Quality

- Air Compliance, Reporting, and Auditing
- Air Dispersion Modeling
- Air Permitting and Support (NNSR, PSD, MSS, Title V, Major Source Construction, Minor Source Permitting)
- Annual Emission Inventories
- Air Quality Applicability Determinations (State, NSPS, NESHAP)
- Greenhouse Gas Reporting (GHG)
- Leak Detection and Repair (LDAR) Review and Auditing (Method 21)
- Optical Gas Imaging (OGI/QOGI)



Waste Management

- Certification of Tank Systems and Unit Closures
- Hazardous Waste Management
- RCRA Permitting and Support
- Treatment, Storage, and Disposal Facility (TSD) Audits
- Waste Characterization
- Waste Compliance Reporting
- Waste Management and Disposal
- Waste Sampling



Water (Wastewater / Stormwater)

- Beneficial Land Use Permits
- Construction Stormwater Permits and Plans
- Discharge Monitoring Reports (DMR)
- Industrial Wastewater Permits
- Permitting & Support (federal and local)
- POTW Discharge Permits
- Stormwater Pollution Prevention Plans (SWPPP)
- Stormwater Sample Collections and Inspections
- Wastewater Sampling



Reporting Community Right-to-Know Act

- Emergency Action Plans
- Continuous Release Reporting
- Facility Response Plans (FRPs)
- Integrated Contingency Plans (ICPs)
- Local & State Emergency Response Plans
- Risk Management Plans (RMPs)
- Spill Prevention, Control, and Countermeasure (SPCC) Plans
- Tier II Reporting
- Toxic Substances Control Act (TSCA) Inventory
- Toxic Release Inventory (TRI)

Containment, Assessment, and Remediation

- Brownfield Closures and Redevelopment
- Cost Benefit Analyses
- EM Surveys
- Feasibility Studies
- Geophysical Surveys
- Groundwater Sampling, Remediation, and Reporting
- Monitor Well Installation
- Post-Closure Plans and Cost Estimates
- Remediation Investigations
- Remediation System Design
- Remediation System O&M
- Soil Sampling, Remediation, and Reporting



Environmental Regulatory Support

- Compliance and Management System Audits
- Compliance Program Development and Management
- Compliance Training
- Due Diligence
- Environmental Compliance Gap Analyses
- Environmental Liability Evaluations / Assessments
- Facility Audit Preparation
- Jurisdictional Determination
- Phase I Environmental Site Assessments
- Phase II Investigations
- Policy and Procedure Development
- Pollution Prevention (P2) Plans
- Regulatory Agency Communication & Negotiation
- Stakeholder Engagement & Public Meetings

Other

- Expert Testimony & Litigation Support
- Field Sampling Services
- Industrial Hygiene
- Wetlands / Corp of Engineer Permitting
- Environmental, Social, and Governance (ESG)

Altamira solves our clients' most complex regulatory, operational, and business challenges by being the first choice and trusted partner for strategy, consulting, technical expertise, and digital technology solutions.



Altamira's Values

As regulatory requirements and social responsibilities continue to evolve, Altamira is here to support clients in the transition. Our custom approach to problem solving starts with listening to our client and building a successful path forward for them to continue to thrive within their industry.

With decades of experience, our team of management consultants, regulatory experts, engineers, and scientists offer a wide range of client solutions, from project specific permitting to implementation of fully integrated



EHS programs. Altamira provides support for OSHA, EPA, and other local /state requirements to mitigate our clients' compliance liabilities and protect the health and safety of workers and surrounding communities.



altamira-us.com

info@altamira-us.com