

# OUR COMPANY

[ALTAMIRA-US.COM](http://ALTAMIRA-US.COM)



ALTAMIRA





# YOUR COMPETITIVE ADVANTAGE

---

## ABOUT US

Altamira is a leading engineering and environmental consulting company specializing in regulatory compliance, strategic advising and digital solutions. With decades of experience and a reputation for integrity, innovation and agility, Altamira partners with clients to solve complex operational and regulatory challenges across various industries. Our multidisciplinary team delivers high-quality services in asset integrity, pipeline safety, environmental, health and safety, geographic information systems (GIS) and energy asset engineering, supported by deep expertise in federal, state and local regulations including PHMSA, EPA, DOT and OSHA.

# WHO WE ARE

Altamira consistently delivers proven value to our clients by leveraging a distinctive combination of technical expertise and operational management experience. We also maintain professional engineering licenses in more than 20 states.

**ENHANCING VALUE  
THROUGH  
INNOVATIVE  
CONSULTING AND  
CREATIVE  
SOLUTIONS**

## **OUR SERVICES:**

- Advisory & Strategic Consulting
- Asset Integrity
- Digital Solutions
- Engineering
- Environmental, Health & Safety
- Geographic Information Systems
- Process Safety Management
- Regulatory Compliance



# OUR VALUES

## OUR PROMISE

We are committed to use our value statements as guiding principles to shape and maintain our company culture. It is the responsibility of leaders to model our values and recognize team members promoting our values.



# ADVISORY & STRATEGIC CONSULTING

At Altamira, our experienced team of technical regulatory experts and professional advisors have decades of experience diagnosing improvement opportunities. Our results enhance operational performance, mitigate regulatory risks and deliver competitive advantage for our clients.

We evolve with our customers, staying agile and adaptable in a dynamic operating environment, as a value-added, long-term partner.



## SUPPORTING CLIENT SUCCESS...

by providing practical, sustainable solutions

### OUR SERVICES:

- Audit Program Development & Implementation
- Competency Training Programs
- Digital Transformation Consulting
- Environmental Permitting & Strategy
- ESG and Sustainability Programs
- Gap Assessment & Industry Benchmarking
- Jurisdictional Analysis & Regulatory Interpretation
- M&A Diligence & Post-Closing Integration
- Operational Management Systems
- Pipeline Program Management
- Regulatory Management

# ASSET INTEGRITY

High-profile pipeline and energy incidents have caused public concern over safety, placing considerable pressure on operators. Altamira provides integrated solutions that address the challenges of operating aging infrastructure and optimizing operational and financial performance.

Our experienced team of technical experts, engineers and consultants develop best work practices that extend the life of critical assets. Our client-specific integrity management programs are designed to sustainably deliver safe, compliant and cost-effective operations.



## DEVELOPING BEST WORK PRACTICES...

that extend the life of critical assets

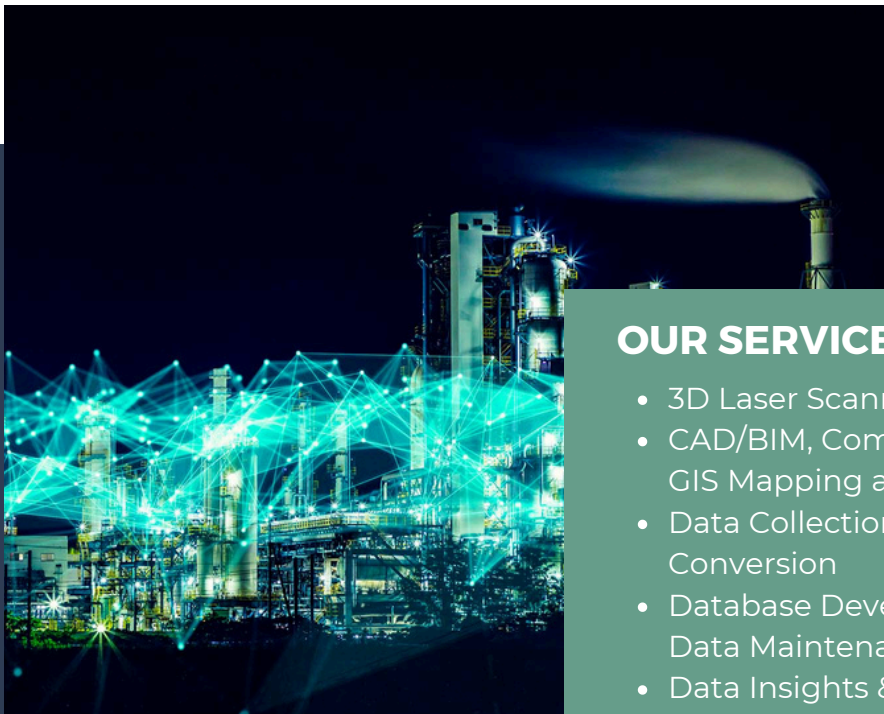
### OUR SERVICES:

- Facility & Pipeline Integrity Management Programs
- Code & Risk-Based Inspection Program Management
- Corrosion Management
- Engineering Analysis & Design
- Fitness for Service Analysis
- ILI Inspection Management, Analysis, Run Comparisons & Corrosion Growth Analysis
- Inspection and Monitoring Program Design & Implementation
- Integrity Management Programs
- Pipeline/Facilities Materials & Records Verification
- Positive Material Identification
- Risk Management & Mitigation

# DIGITAL SOLUTIONS

Altamira uses digital solutions to connect people with innovative outcomes. Our team of discipline and digital experts understands your wide range of challenges tied to legacy enterprise systems, inconsistent data and records and the application of advanced technologies.

To your competitive advantage, our methodology is applied to every digital deliverable, with emphasis placed on your business objectives in safety, regulatory compliance, operations efficiency and commercial growth.



## USING DIGITAL SOLUTIONS TO...

connect people with innovative outcomes

### OUR SERVICES:

- 3D Laser Scanning
- CAD/BIM, Computational Design & GIS Mapping and Analysis
- Data Collection, Scanning & Conversion
- Database Development, Hosting & Data Maintenance
- Data Insights & Analytics
- Digital Transformation Consulting
- Predictive Modeling & Performance Optimization
- Systems Integration, Data Integration & Reconciliation

# ENGINEERING

Whether your organization is expanding assets based on commercial opportunities or performing ongoing maintenance activities, our engineering design team is equipped to support the entire project life cycle, from feasibility studies through operational management.

Altamira's extensive engineering services rank among the best in the energy sector. Our expert team has decades of experience delivering comprehensive engineering and design packages, along with as-built services, for new expansion and maintenance capital programs. Engineering projects executed by our experienced staff are designed to ensure that an enterprise's assets are optimized from the ground up.



## OUR SERVICES:

- As-Built/CADD
- Conceptual Studies/FEED
- Facilities Engineering and Design
- Pipeline Engineering and Design
- Project Management
- Testing and Inspection

## ENGINEERING EXPERTISE TO SUPPORT...

the entire project life cycle,  
from feasibility studies  
through operational  
management

# ENVIRONMENTAL, HEALTH & SAFETY

Environmental, Health and Safety (EHS) requirements are constantly evolving as new legislation and guidance emerge, requiring industries to adapt quickly to remain compliant. These changes often present complex challenges for our clients — where regulatory compliance, financial considerations and social responsibility intersect.

At Altamira, our mission is to deliver comprehensive, forward-thinking EHS solutions that help our clients practice responsible environmental stewardship, protect the health of their employees and operations and cultivate a strong safety culture. Our streamlined permitting and design processes follow a disciplined, methodical approach to efficiently support environmental compliance.



## SUPPORTING CLIENTS...

amid evolving regulatory requirements

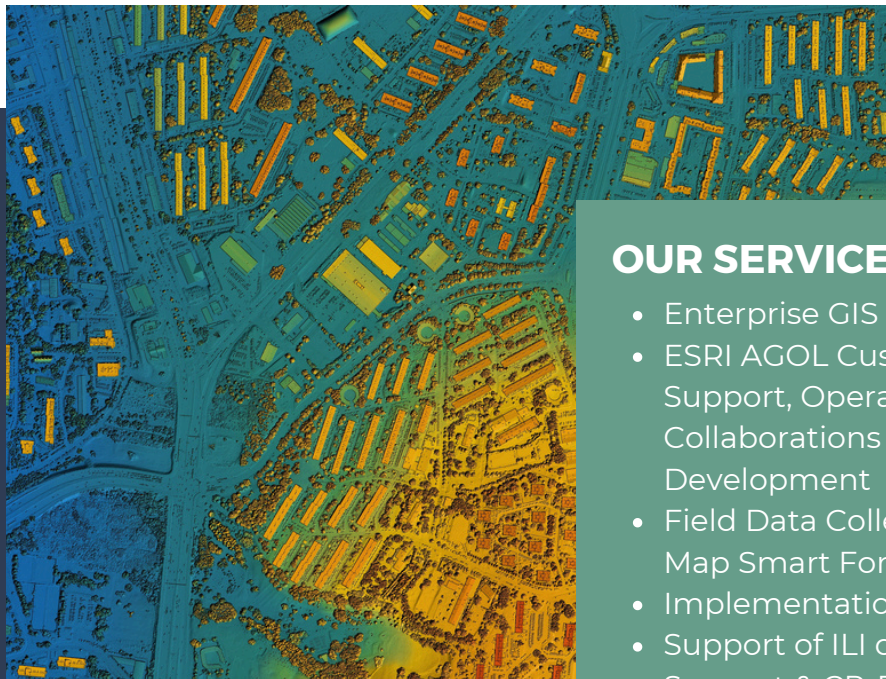
### OUR SERVICES:

- Air Quality Compliance
- Air Quality Permitting & Dispersion Modeling
- Environmental Assessments & Due Diligence
- Facility Response Plans (EPA, USCG and/or PHMSA)
- Industrial & Wastewater Permitting
- Industrial Hygiene
- NEPA Permitting
- Optical Gas Imaging
- Process Safety Management
- Resource Conservation Recovery Act Consulting
- Safety Program Auditing & Training
- Soil & Groundwater Remediation
- Spill Prevention, Control & Countermeasure (SPCC) Plans & Applicability Assessments
- Stormwater Management & Permitting
- Waste Management Consulting

# GEOGRAPHIC INFORMATION SYSTEMS

Altamira is a leading provider of Geographic Information Systems (GIS) solutions, delivering customized, scalable tools to help clients solve the industry's most complex challenges. Our solutions are developed in close collaboration with your engineers, planners, surveyors and operations teams to ensure a practical, best-fit approach tailored to your organization's needs.

We support the full GIS lifecycle — from data collection and management to advanced spatial analysis and visualization — enabling better decision-making, improved operational efficiency and optimized asset performance. The Altamira team supports organizations at both the corporate and site levels through comprehensive, turnkey GIS services.



## PROVIDING IN-HOUSE SUPPORT AND SOLUTIONS...

to implement and  
manage your entire  
Enterprise GIS system

### OUR SERVICES:

- Enterprise GIS Solutions
- ESRI AGOL Customization and Support, Operational Dashboards, Collaborations & Web App Development
- Field Data Collection Using Field Map Smart Forms
- Implementation of GIS Standards
- Support of ILI data, CIS to GIS Support & CP-PCS/Allegro GIS Integration
- Turnkey Solutions from GIS Support to Complete Management of GIS

# PROCESS SAFETY MANAGEMENT

A sound Process Safety Management (PSM) program is crucial for business continuity, loss control, regulatory compliance and environmental protection. Altamira's experienced consultants can audit, develop, implement and maintain your process safety program using a risk-informed approach and deep knowledge of codes and standards.

We offer services such as Process Hazard Analysis, Program Audits and Inspections, Consulting, Program Development and Training to ensure compliance with OSHA's PSM and EPA's RMP regulations, keeping your employees safe and your company compliant.



## SUPPORTING CLIENTS...

to identify and manage risks associated with their operations

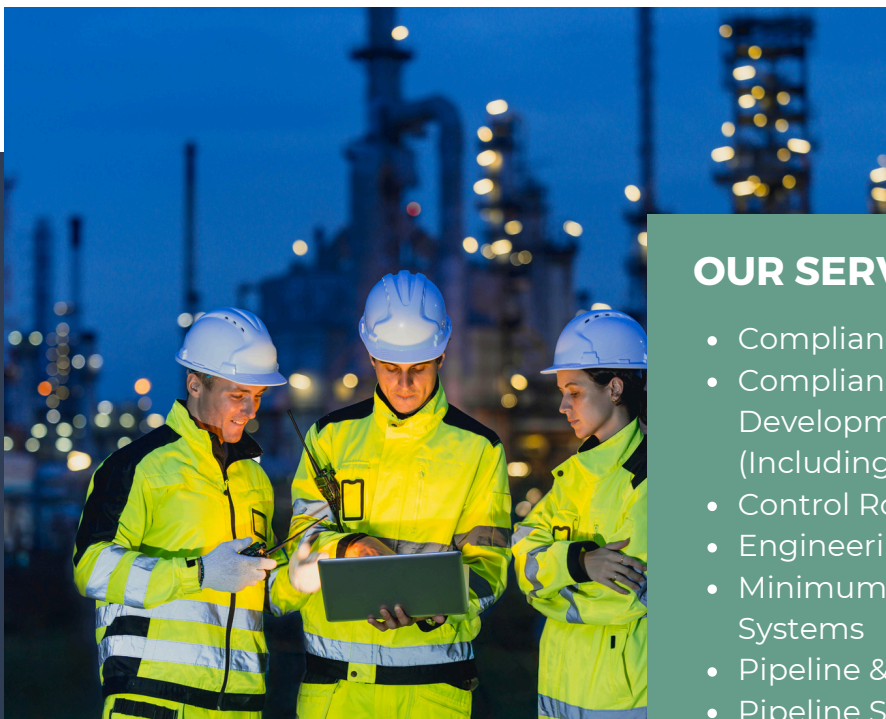
### OUR SERVICES:

- Evaluating PSM System Implementation & Performance
- Implementing a New PSM System
- Integrating New PSM Elements into an Existing PSM System
- Improving an Existing PSM Element or System
- Specific Examples:
  - Facilitate Process Hazard Analysis (PHA) 5-Year Revalidations
  - Facilitate Project Detail Design Process Safety Reviews
  - Facilitate 3-Year Compliance Audits
  - Generate Process Safety Information for New Facilities
  - Improving a Facility's Incident Investigation Process
  - Improving a Facility's Management of Change (MOC) Process
  - Leading Formal Incident Investigations

# REGULATORY COMPLIANCE

In today's complex and evolving regulatory environment, having a trusted advisor is essential to the safe, compliant operation of your assets. Altamira's team of regulatory experts brings deep, hands-on experience addressing the most challenging compliance issues, with extensive knowledge across the federal and state agencies that govern your operations.

No matter the size or complexity of the project, Altamira's multidisciplinary team of consultants, engineers, and technical specialists partner closely with you to proactively manage and reduce regulatory risk. We deliver practical, cost-effective and sustainable solutions that keep your projects moving forward with confidence.



## CLIENT SPECIFIC SOLUTIONS...

for the most complex regulatory challenges

### OUR SERVICES:

- Compliance & Regulatory Training
- Compliance Program Development & Management (Including PHMSA's Mega-Rule)
- Control Room Management
- Engineering Analysis Programs
- Minimum Safety Prevention Systems
- Pipeline & Facility Audit Support
- Pipeline Safety Management Systems
- Process Safety Management
- Regulatory Gap Assessment & Mitigation
- Safe Work Practices Development
- Technical Document Development



**PHONE :**

878.768.8628



**OUR OFFICES :**

Angleton, TX  
Houston, TX  
Irving, TX  
Kingwood, TX  
Oklahoma City, OK



**WEBSITE :**

[altamira-us.com](http://altamira-us.com)

---

**CONTACT US TODAY!**



**ALTAMIRA**